

TALK &

What meant Living With Disasters?

15TH / NOV.

2023 | 13:30 PM - 15:30 PM



Living with
Disasters
IFLA Asia-Pacific
Regional Congress
2023 TOKYO, JAPAN



IFLA ASIA-PACIFIC
INTERNATIONAL FEDERATION
OF LANDSCAPE ARCHITECTS

SHARE



LEST WE FORGET:

We have the eyes of artists,

The Brains of Scientists,

The heart of Poets,

**And the Wisdom of
Philosophers.**

We are Landscape Architects

Listen to the Tomodachi Voices to find what Landscape Architects can.



Bhutan



Bangladesh



Palau



Mongolia



Tonga



Vietnam



Türkmenistan



Maldives

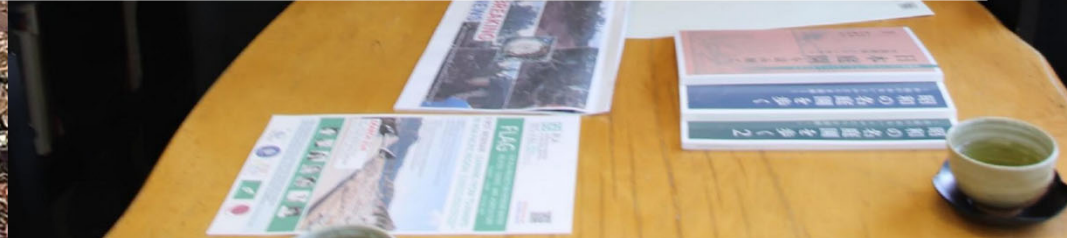


IFLA ASIA-PACIFIC

Windows のライセンス認証
認定を得た
INTERNATIONAL FEDERATION
OF LANDSCAPE ARCHITECTS



After human care, we need nature based solutions for living with Nature.

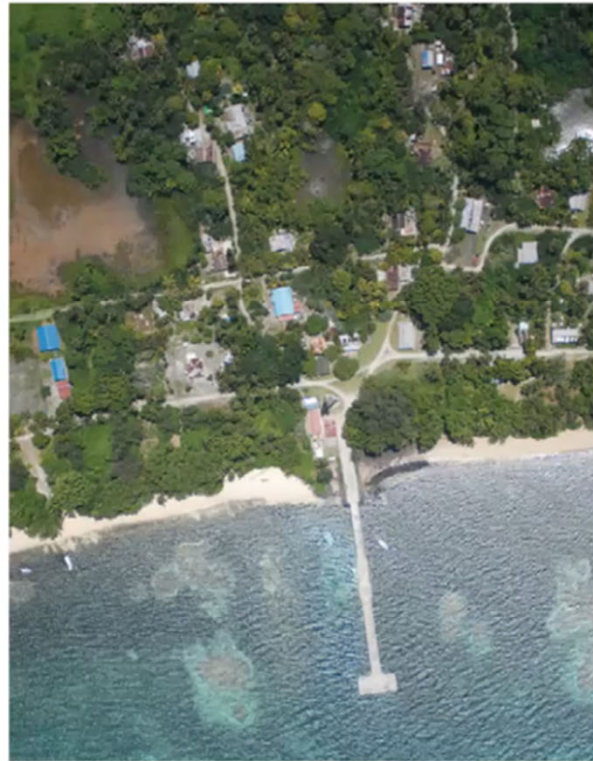




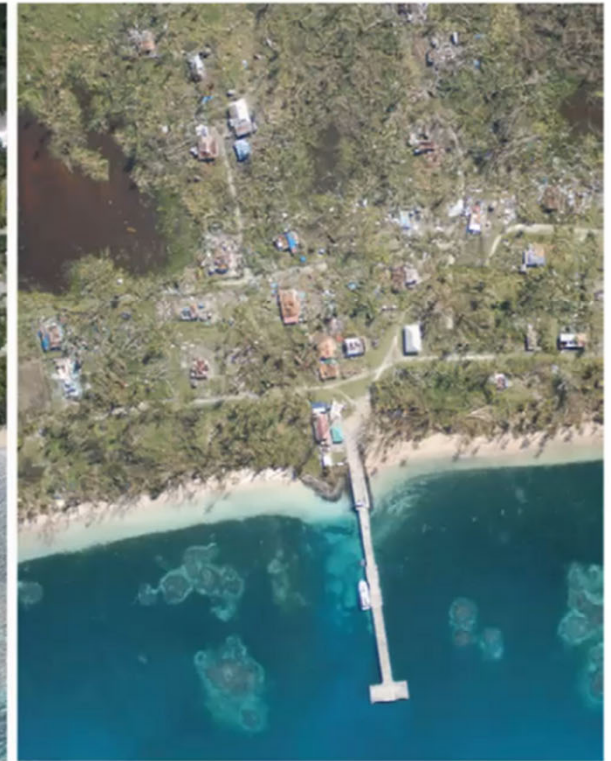
aised the sea level already in Palau.
e Found the Fact from the Voices.

Typhoons and Storms

Indicator	How has it changed?	Projected future change
Tropical cyclone frequency	No change	?
Tropical cyclone intensity	No change	↑



18 Sep 2013



8 Nov 2013

Kayangel Island's village center and dock—as well as the island's primary area of taro production—before (left) and after (right) Super Typhoon Haiyan. Photos: Patrick L. Colin, Coral Reef Research

A photograph of a traditional Japanese garden. The scene is viewed through a wooden frame with a roof made of woven paper. In the foreground, there is a bamboo fence. The garden features mist rising from the ground, bamboo stalks, and a central stone lantern. The background shows a building and trees.

IFLA APR JAPAN 2023

Special Talk & Share Short Pitch Presentation

Give us Seeds for Argument!